



Catfoss

Delivering the Healthcare of the Future

In partnership with the



Order by Direct Award via the NHS SBS Modular Framework and Catfoss could deliver a Fully HTM / HBN compliant 28 Bed Ward by 31st March 2022

We have capacity to prepare and despatch this 972sqm building enabling delivery, completion, building **handover and occupation by 31st of March 2022** providing your Trust with high specification accommodation including:

- 5No. large 4 Bed wards of circa 74m²
- Each 4 Bed ward has 2no. accessible toilets and 1no. accessible shower
- 8No. spacious 1 Bed individual wards of circa 20m²
- Each 1 Bed individual ward has accessible ensuite facilities
- Dedicated reception area with 1no. additional touch down station
- Dirty Utility room & Clean Utility room
- Accessible staff / visitor toilets
- Ward Kitchen
- Staff room with mini kitchen
- Office/ meeting room
- Clinical, Linen & Waste stores

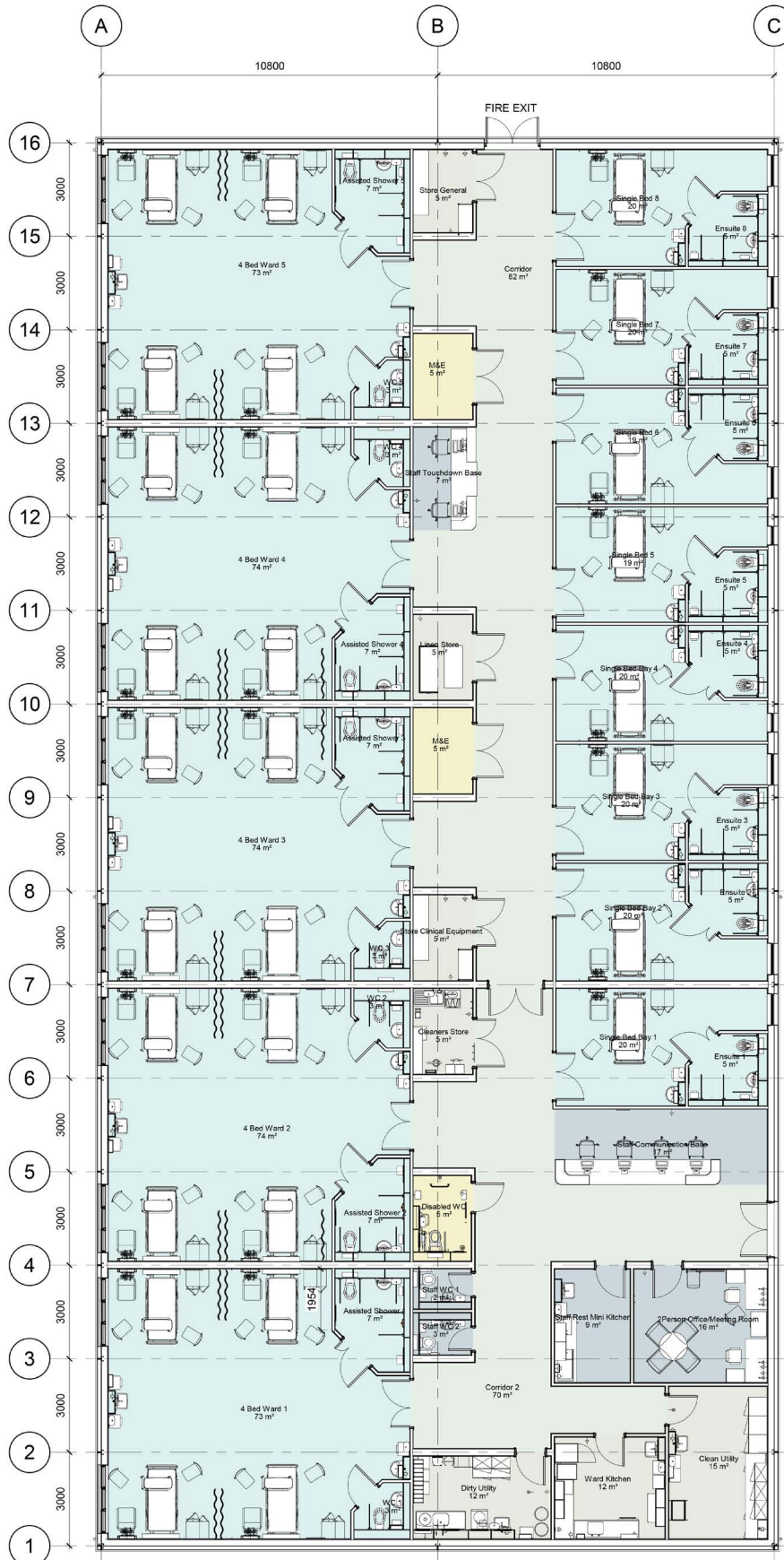
To take a live tour of a similar ward facility installed for University Hospitals of Derby and Burton click the button to the right and see how your new ward could look.

For more information contact our sales team on 01964542225 or contact@catfoss.co.uk



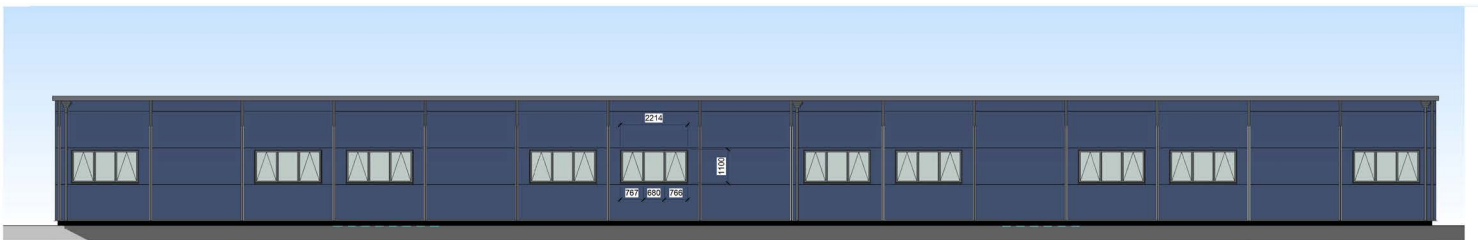
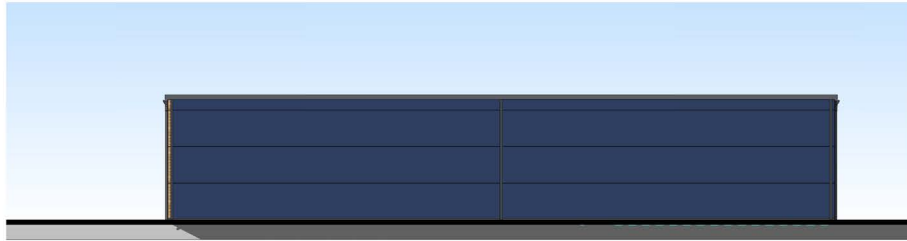


Floor Plan





Elevations



See page 1 for Floor Plan